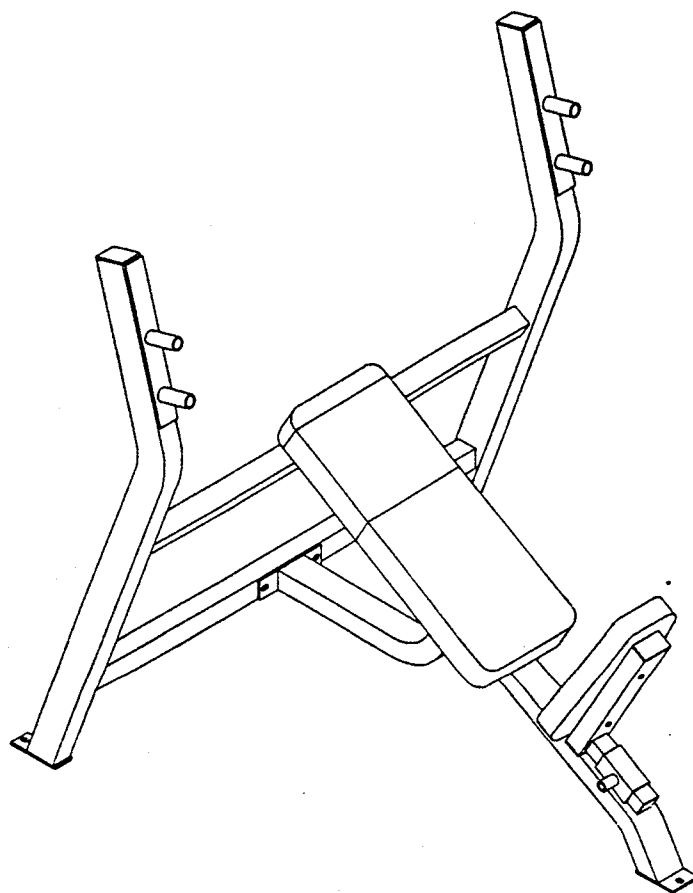


**PARABODY**

*Serious Steel*

**920101  
INCLINE PRESS BENCH  
ASSEMBLY INSTRUCTIONS**



ParaBody, Incorporated  
14150 Sunfish Lake Boulevard  
Ramsey, MN 55303  
1-800-328-9714

**920101 INCLINE PRESS BENCH ASSEMBLY PARTS LIST**

**SORT AND COUNT ALL PARTS BEFORE BEGINNING ASSEMBLY**

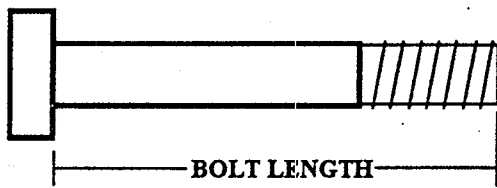
**HARDWARE:**

ITEM	NAME/DESCRIPTION	QTY
1.	1/2 X 3 IN BOLT .....	4
2.	3/8 X 2-3/4 IN BOLT .....	5
3.	1/2 IN WASHER .....	4
4.	3/8 IN WASHER .....	5
5.	1/2 IN LOCK NUT .....	4
6.	SPRING PIN .....	1
7.	3 X 2 IN END CAP .....	2
8.	1-3/4 IN SQ END CAP .....	1
9.	1-1/2 X 3/4 IN GLIDE (8 PER) .....	1

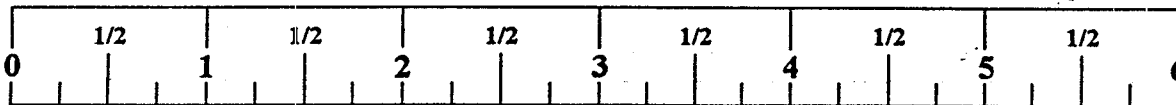
**WELDMENTS/PARTS:**

ITEM	NAME/DESCRIPTION	QTY
1.	UPRIGHT FRAME WELDMENT ..... (6614403) .....	1
2.	BENCH FRAME WELDMENT ..... (6614503) .....	1
3.	SEAT SUPPORT WELDMENT ..... (6614602) .....	1
4.	SEAT PAD ..... (66186XX) .....	1
5.	BACK PAD ..... (66185XX) .....	1

**NOTE: BOLT LENGTH IS MEASURED FROM THE UNDERSIDE OF THE HEAD OF THE BOLT.**



**BOLT LENGTH RULER:**



**THANK YOU**

FOR PURCHASING THE 920101 INCLINE PRESS BENCH, PLEASE SAVE THESE ASSEMBLY INSTRUCTIONS FOR YOUR PERSONAL REFERENCE, AND ADDITIONAL SERVICE INFORMATION.

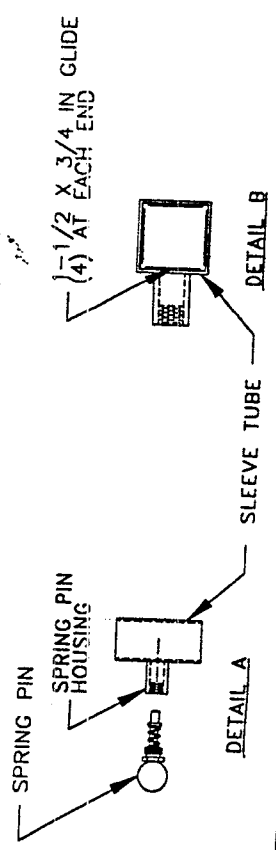
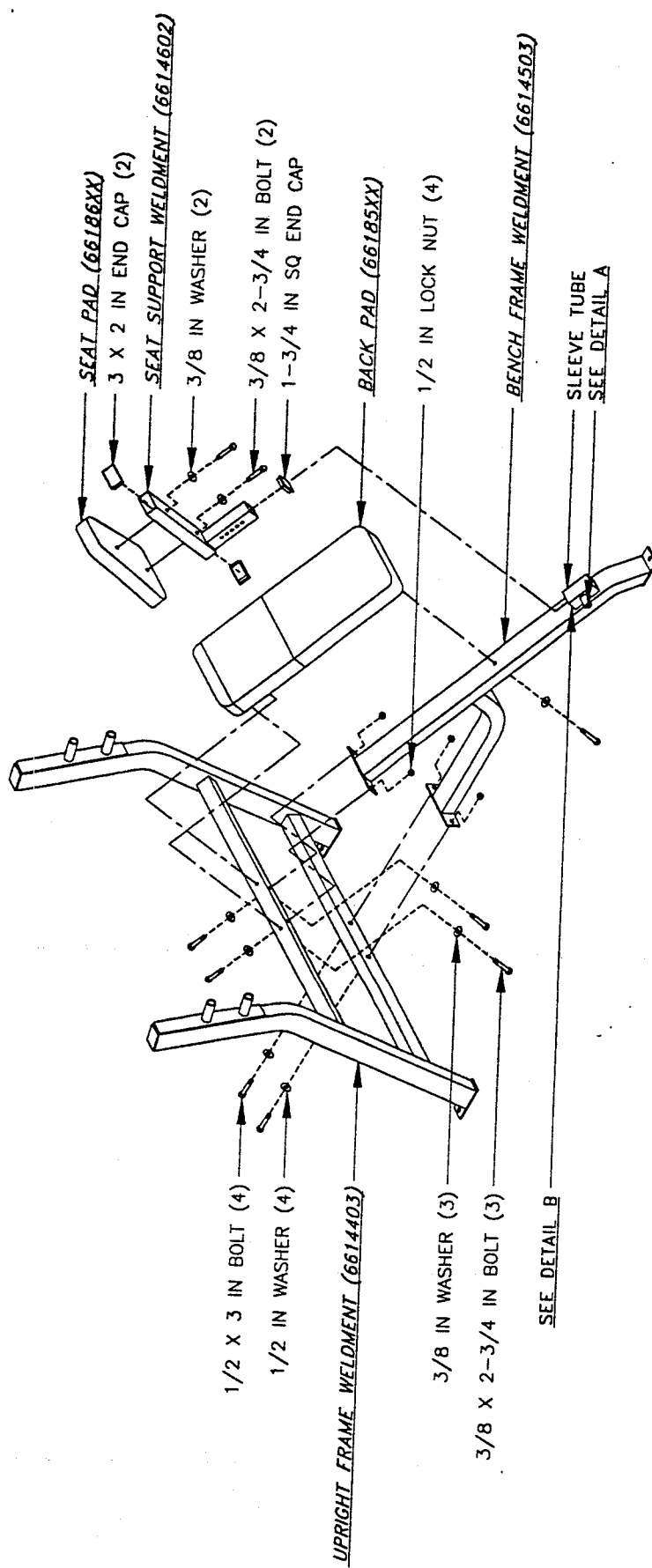
**\*\*\*IMPORTANT\*\*\***

- **THE 920101 INCLINE PRESS BENCH MUST BE ASSEMBLED ON A FLAT, LEVEL SURFACE TO ASSURE ITS PROPER FUNCTION.**
- **PARABODY STRONGLY RECOMMENDS THAT THIS PRODUCT BE ASSEMBLED BY TWO PEOPLE TO AVOID POSSIBLE INJURY.**
- **IF YOU EXPERIENCE ANY PROBLEM WITH THE ASSEMBLY OF THIS PRODUCT, PLEASE CONTACT YOUR DEALER OR YOUR PARABODY CUSTOMER SERVICE REPRESENTATIVE AT: 1-800-328-9714**
- **TOOLS REQUIRED: RATCHET, 3/4 SOCKET and WRENCH, 9/16 SOCKET and WRENCH, and RUBBER Mallet or HAMMER.**

1. **SECURELY assemble the BENCH FRAME WELDMENT to the UPRIGHT FRAME WELDMENT as shown on drawing.**
2. **Attach eight (8) 1-1/2 X 3/4 IN GLIDES to the SLEEVE TUBE on the BENCH FRAME WELDMENT as shown in DETAIL B.**
3. **SECURELY assemble the SPRING PIN to the SPRING PIN HOUSING of the SLEEVE TUBE as shown in DETAIL A.**
4. **Insert two (2) 3 X 2 IN END CAPS, and one (1) 1-3/4 IN SQ END CAP into the ends of the SEAT SUPPORT WELDMENT as shown on drawing.**
5. **SECURELY assemble the SEAT PAD to the SEAT SUPPORT WELDMENT as shown on drawing.**
6. **Pull back the SPRING PIN on the SLEEVE TUBE of the BENCH FRAME WELDMENT and insert the SEAT SUPPORT WELDMENT. Release the SPRING PIN into the desired hole.**
7. **SECURELY assemble the BACK PAD to the UPRIGHT FRAME, and BENCH FRAME WELDMENTS as shown on drawing.**

DASH NO  
01 AS SHOWN

REVISIONS			
REV	DESCRIPTION	CHG NO	APP'D



TOLERANCES (EXCEPT AS NOTED)	DECIMAL
FRACTIONAL	
ANGULAR	
TITLE PARABODY, INC. RAMSEY, MINNESOTA	
ASSY INST, 920101	
SCALE 1/16	SIZE DRAWING NO.
SHEET 1 OF 1	B
DR MGN	5/86
CHK'D MGN	5/86
APP'D	66265